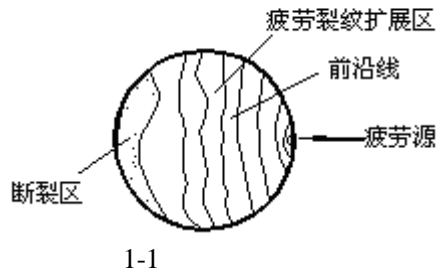


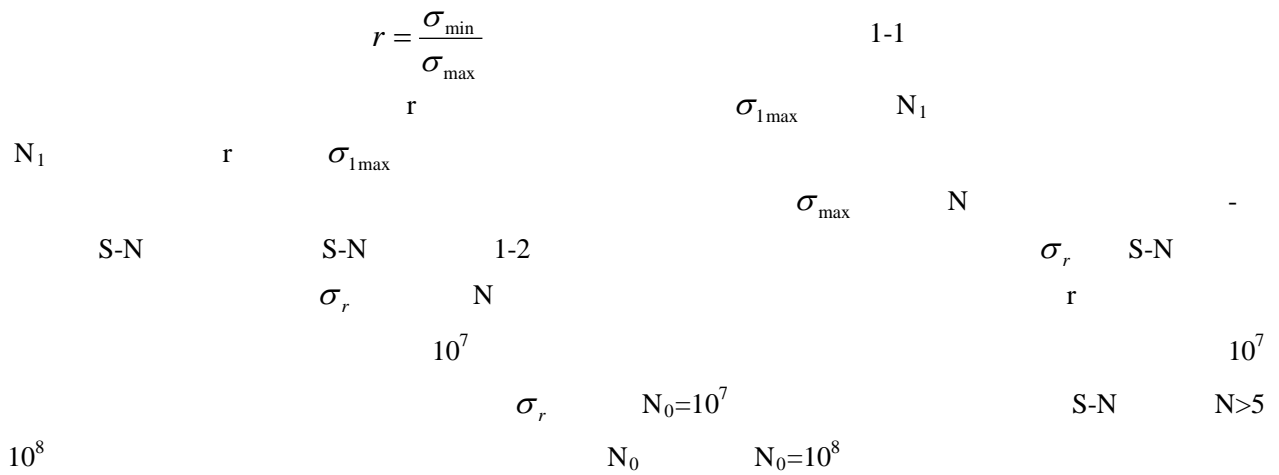
1-1

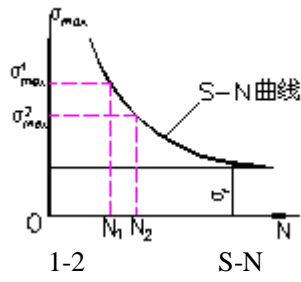
70%



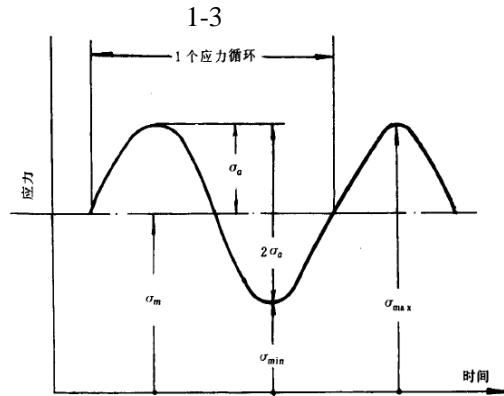
- 1.
- 2.
- 3.
- 4.

1. PLD-50KN-250NM
- 2.
3. S135
4. PLT-10





σ_{max}



1-3

PLD-100KN

5Hz

$\dot{\epsilon}$

$\dot{\epsilon} \quad 10^{-4}$

$10^{-8} /s$

β

$$\beta = \frac{\psi_K - \psi_S}{\varphi_K}$$

1-2

1-2 $\psi_K \quad \psi_S$

β

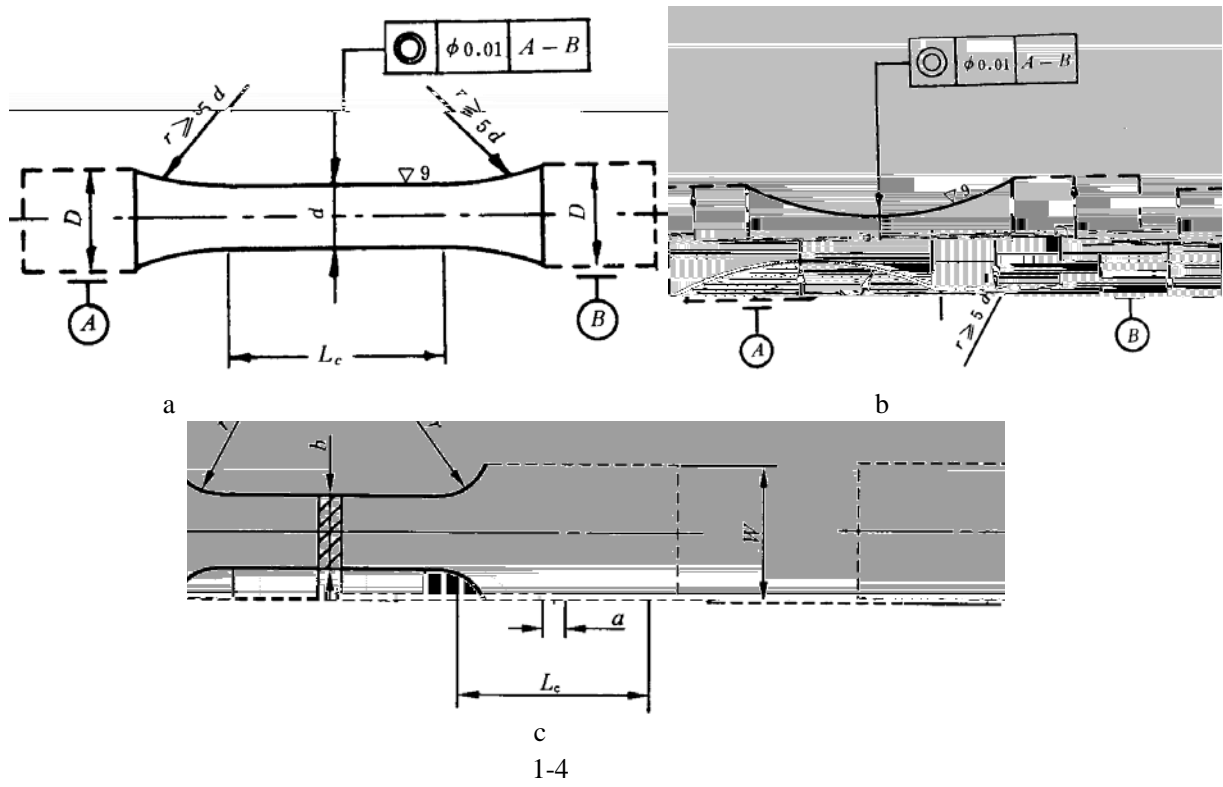
1.

GB/T 12443-2007

GB 3075-80

2.

1-4



3.

$$\sigma = \frac{F}{\pi r^2} \quad \sigma = \frac{F}{ab} \quad 1-3$$

F

r

$\Delta L / \Delta t$

ΔL

$$\varepsilon = \frac{\Delta L}{L_0}$$

1-4

$$\varepsilon = \frac{\Delta L}{L_0} \frac{1}{\Delta t} = \frac{1}{L_0} \frac{\Delta L}{\Delta t}$$

1-5

$\varepsilon -$

$L_0 -$

$\varepsilon -$

$\Delta L / \Delta t -$

$$\frac{1}{L_0} \frac{\Delta L}{\Delta t} \quad L$$

L

1.

2.

3.

R_a $0.32 \mu m$

1.

2.

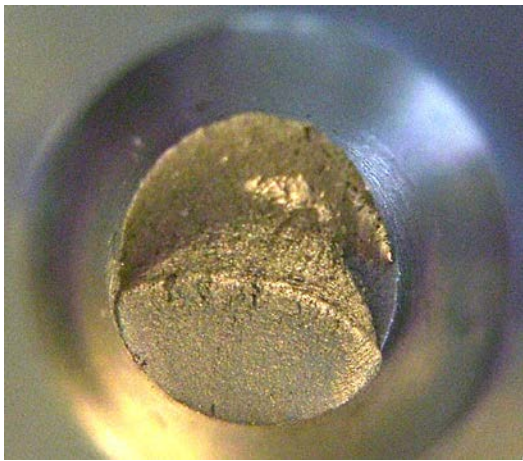
3.

1.

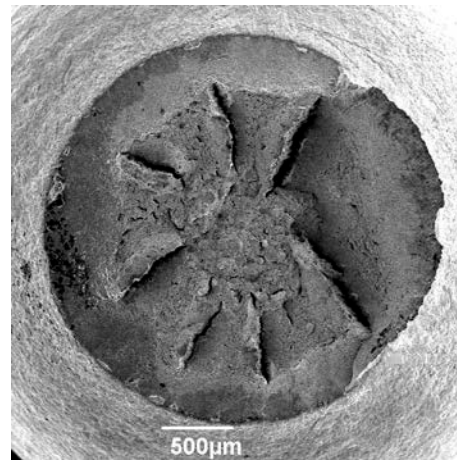
2.

	r	σ_a	N_f
S135	0.1	444.4	169059

3.

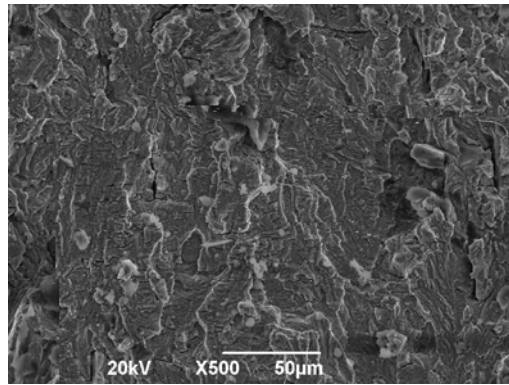
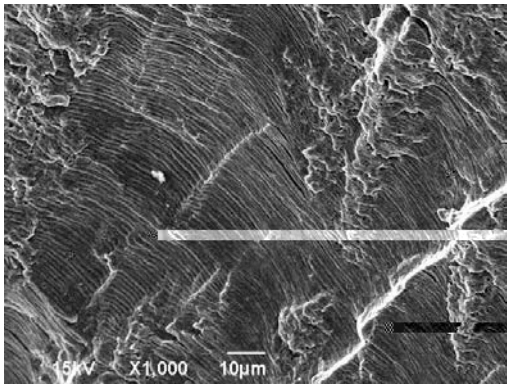
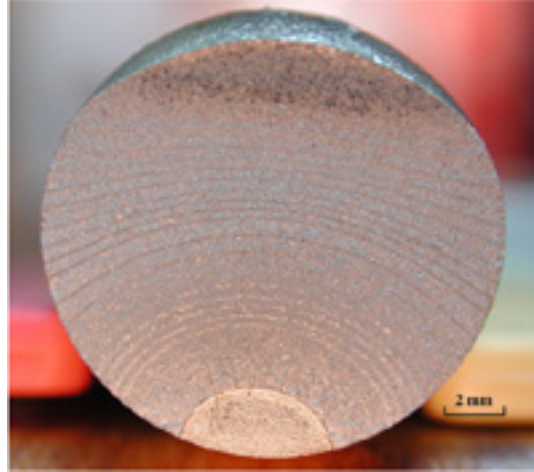
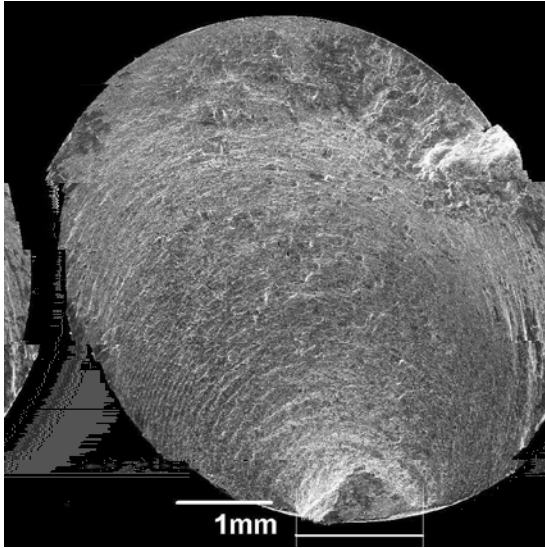


S135



S135

4.



1.

2.